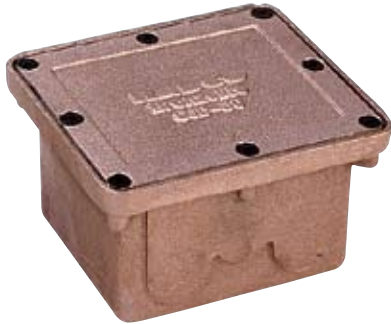


Project:
P.O.:

SJB30 Submersible Junction Box



Lid:
Marine grade cast bronze.

Fasteners:
Stainless steel.

Gasket:
Single-piece, high temperature silicone.

Housing:
Marine grade cast bronze. Junction box has a volume of 70 cubic inches and is furnished with internal grounding and bonding lugs per the NEC. Use with up to eight luminaires. Maximum bottom taps (N.P.T.) = (3) 1/2", 3/4" or 1". Maximum North & South side taps (N.P.T.) = (6) 1/2" or 3/4", three each side. Maximum East & West side taps (N.P.T.) = (2) 1/2", 3/4" or 1" one each end.

Certification:
UL Listed to U.S. and Canadian safety standards for use with swimming pools.

Due to a program of continuous improvement, Bronzelite reserves the right to make any variation in design or construction to the equipment described.

Any dimension on this sheet is to be assumed a reference dimension and used for information purposes only. It does not govern manufacturing or inspection requirements.

Ordering Information

When ordering, specify size NPT of bottom hub(s) and size (NPT) and placement of side taps. Cord compression seals must be ordered separately.

Total Forms Per Order: of

Total Duplicate Junction Boxes per this Order Form	Side Taps Max. 8 Total	North Qty. 3 Total	East Qty. 1 Total	South Qty. 3 Total	West Qty. 1 Total	Bottom Qty. 3 Total	Bottom Taps Max. 3 Total
	1/2" NPT (3 max)						1/2" NPT
	3/4" NPT (3 max)						3/4" NPT
	1" NPT (1 max)	N/A		N/A			1" NPT

FORM INSTRUCTIONS:

Specify Total # of forms per order at top of order matrix (i.e. 1 of 1)
Specify Total qty. of duplicate Junction Boxes above.
Specify qty. per side in appropriate blank to right of SIDE TAPS.
Specify qty. per bottom in appropriate blank to left of BOTTOM TAPS.
One drilling configuration per request form.

Project Notes:

Approval:

