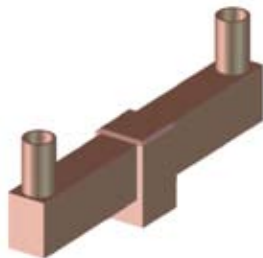


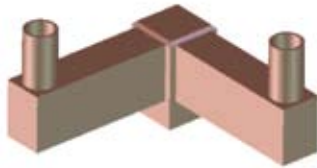
Project:

P.O.:

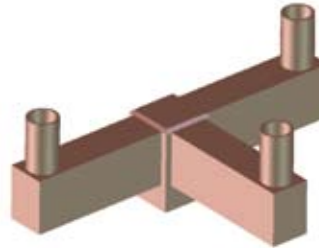
Pole Top Adapters



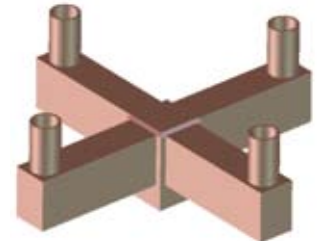
PT2180



PT2090



PT3090



PT4090

Due to a program of continuous improvement, Bronzelite reserves the right to make any variation in design or construction to the equipment described.

Any dimension on this sheet is to be assumed a reference dimension and used for information purposes only. It does not govern manufacturing or inspection requirements.

Specifications

PT2180:

For mounting two luminaires at 180°.

PT2090:

For mounting two luminaires at 90°.

PT3090:

For mounting three luminaires at 90°.

PT4090:

For mounting four luminaires at 90°.

Project Notes:

Approval:

- A=Black
- B=White
- H=Dark Bronze
- I=Silver Gray
- J=Dark Green
- X=Silver

Ordering Logic

Model No.	EPA	Finish
PT2180	1.9 (250/400W), 2.1 (1000)	()
PT2090	1.7	()
PT3090	2.1	()
PT4090	2.1	()

Model No.

Finish