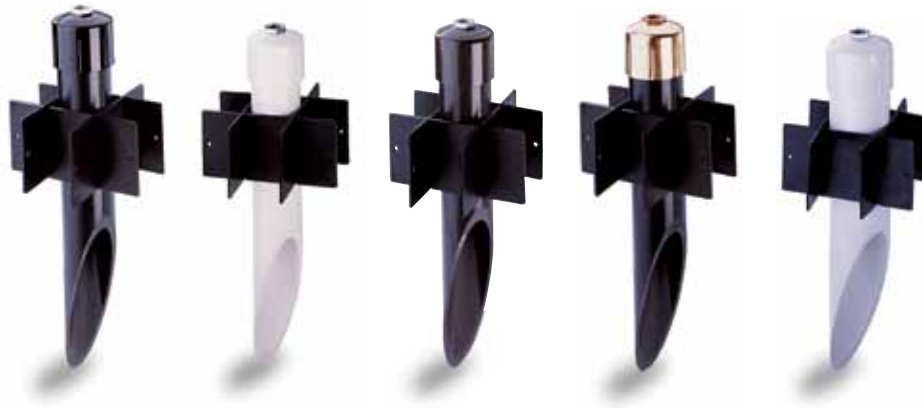


# Bronzelite

100 Craftway • Littlestown, PA 17340 • Phone: 800 273-1569 • Fax: 717 359-9545 • www.bronzelite.com

©2004-2011 Koninklijke Philips Electronics N.V. All rights reserved.  
Bronzelite is a registered trademark of Philips.

## Mounting Kits



**BS3BLK**

**BS3WHT**

**BS3DB**

**BS3N**

**BS35WHT**

Due to a program of continuous improvement, Bronzelite reserves the right to make any variation in design or construction to the equipment described.

Any dimension on this sheet is to be assumed a reference dimension and used for information purposes only. It does not govern manufacturing or inspection requirements.

### Specifications

- ETL and cETL Listed
- Suitable for wet locations
- Heavy wall, impact-resistant PVC
- Threaded 1/2" N.P.T. (1.3cm) hub with ground wire
- Slanted bottom accepts conduits of different depths
- PVC stabilizers included (no concrete needed)
- 3" or 3-1/2" O.D. (7.6cm or 8.9cm) available
- Standard length 19" (48.3cm), other lengths available
- Accepts "Y" or "T" fitters (by others)
- Available in white, black, bronze or verde
- May be painted additional colors with water base paint
- Use with ETL listed wet location fixture

#### Project Notes:

#### Approval:

Model No.	Description	Finish	Packaged
BS3BLK	3" O.D. (7.6cm) x 19" (48.3cm) Post	Black	12
BS3WHT	3" O.D. (7.6cm) x 19" (48.3cm) Post	White	12
BS3VRD	3" O.D. (7.6cm) x 19" (48.3cm) Post	Verde	12
BS3DB	3" O.D. (7.6cm) x 19" (48.3cm) Post	Bronze	12
BS3N	3" O.D. (7.6cm) x 19" (48.3cm) Post	Cast Brass	12
BS35WHT	3-1/2" O.D. (8.9cm) O.D. x 19" (48.3cm) Post	White	9

BS3N used with cast bronze fixtures only. All others used with aluminum or composite.